

Stitchology Workshop

Wish you knew more about how to resolve everyday stitch & seam quality problems?

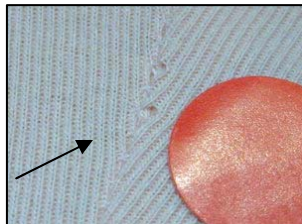
Stitchology will give you useful knowledge how to overcome the most typical seaming problems.

Topics covered include:

- Understanding common stitches and why each is used
- How to use A&E's popular Stitch Matrix for correctly communicating Stitch Types to Contractors using the ISO4915 stitch numbering system
- Common seam quality issues and solutions for both wovens & knits
 - Minimizing seam puckering
 - Minimizing needle cuts and needle holes on knits
 - Sewing stretch knits
 - Minimizing seam failures on wovens & knits

What should you hope to gain from this **Stitchology** Workshop?

- How to use A&E's popular common seam unquality Matrix
- Better understanding of garment construction
- Knowledge of the factors affecting seam integrity and seam appearance
- How to trouble-shoot common stitching problems and offer suggestions to your sourcing companies, vendors and contractors on ways to improve the quality of *your* products.



Needle Cutting



514 Stitch – ISO4915

This 2 1/2 hour **Stitchology** workshop is loaded with practical, helpful ideas that can assist you in resolving everyday sewing issues. You will draw upon information covered in our **Threaducation** workshop, a prerequisite for **Stitchology**. You are encouraged to bring sample garments with thread and seam related quality issues to the class for discussion.

You provide: A classroom, large screen (or blank wall), and a table to set-up our projector on.

A&E provides: All handouts with the seminar – and, it's **FREE!**

For more information contact your local A&E GRS representative or Global Retail Solutions Dept., American & Efird, Inc., P.O. Box 507, Mt. Holly, NC 28120. Phone: (800) 438-5868; Fax: (704) 820-2857. All Workshops were designed for A&E and for educating A&E Customers. Materials should not be reproduced except with permission from A&E.